



November/December 2015 NEWSLETTER

Kiewa Catchment Landcare Groups

Incorporating Baranduda, Kergunyah-Gundowring, Kiewa-Bonegilla,
Upper Kiewa & Yackandandah sub-groups

Website: <http://northeast.landcarevic.net.au/kiewa>



Vale Ron Herbert – Valued Landcare member & Nest box builder extraordinaire



Kiewa Catchment Landcare Groups were saddened to learn of Ron's passing in September and we extend our heartfelt condolences to his wife Helen, and children David and Karen. Ron was a past President of Baranduda Landcare and a much-loved character. He joined Baranduda Landcare in 1998, was elected to the committee in 2002 and served as President for four years from 2006 to 2010. Ron was renowned for applying his wood craft skills to building nest boxes for threatened mammals, devoting considerable time and energy perfecting design and construction traits that have become standard across the Landcare movement.

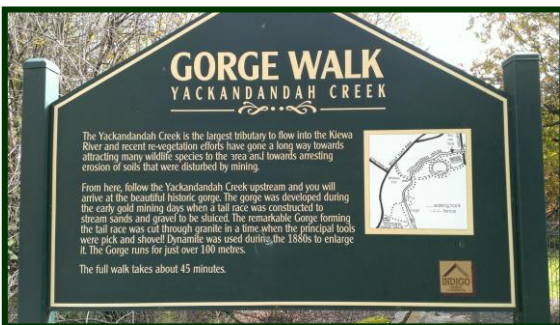
He was (and still is) considered the doyen, the absolute champion in this field. Ron has made plenty (100's if not 1000's) of nest boxes over the last 15 years. An educator at heart, he also shared his knowledge and trained Green Corp, Landcare and other groups in the art of nest box construction. As one member recently commented; "Every time I look at our nest boxes I am reminded of Ron". Thanks Ron for your outstanding contribution. We will miss you. *Photo: Ron at home with newly constructed bat boxes (2007)*

Kiewa Catchment Landcare Groups AGM – Wednesday 25th November at Yackandandah



You are cordially invited to attend the AGM on Wednesday 25th November, 8.00pm at Grace's Place, 13 High Street, Yackandandah. This will be an opportunity to celebrate our achievements over the past year, and to elect our Executive committee for the next 12 months. The Executive meets on the third Wednesday of each month at 7.30pm. Meetings are held at different locations across the Catchment. We would welcome your nomination. Nominations can be directed to the secretary, Jos McAlister, mcalistertojo@live.com, phone; 02 6027 1816.

"Yackandandah Creek – Community Visioning Workshop & BBQ" – Tuesday 24th November



The Yackandandah Creek and surrounds offers a great deal to the town and community, but it is under pressure from weeds and erosion. You are invited to a "Community Visioning Workshop" to gather your thoughts on how we can tackle these issues now and into the future. There will be a guided Gorge walk at 6.00pm (meet at Yackandandah Sports Park Car Park), followed by a light BBQ tea at 7.00pm. The facilitated workshop will be held at the Sports Park function room and will commence at 7.30pm. We look forward to your input. All welcome! To assist with catering please RSVP to Jenny Pena, 0418 890 557 or just turn up.

"NO SHOOTING SIGNS" available from Landcare - \$22.00 each (corflute – 420mm x 594mm)



The first print run of these signs is underway. The text on the sign is:
WARNING Carrying firearms on private property without the permission of the owner is a serious offence punishable by fines over \$7000 and/or imprisonment for 12 months (Firearms Act 1996 s131). Any person found on this property with a firearm and without the express permission of the owner for the dates in location will be prosecuted. All previous authorities are revoked. By order of the land owner

Orders can be directed to: Peter & Rhonda Serpell, phone 0419 448 943 or email: rhondaserpell@bigpond.com

“2016 KERGUNYAH LANDCARE CALENDAR” – A fantastic Christmas gift idea...



Kergunyah Landcare has produced a 2016 calendar featuring local native wildlife. The stunning photographs have been generously provided by Kergunyah Landcare member Brett Roberts. The calendar features three images each month and measures 295mm x 412mm and comes with a matching envelope. We would also like to acknowledge Neville Bartlett from Baranduda Landcare who very kindly provided us with the calendar template and assisted with the printing process. Neville is the creator of the iconic “Beautiful Baranduda” calendar.

Kergunyah Calendars are on sale for \$20.00 and orders can be directed to belinda.pearce@landcarevic.net.au ph. 0407 227 814. All proceeds from calendar sales will go to Landcare.

Photo: Nankeen Kestrel photographed at Kergunyah by Brett Roberts

SUCCESSFUL PLANTING DAY AT UPPER GUNDOWRING – Many thanks to volunteers



Our final planting day for 2015 was at Upper Gundowring. Many thanks to everyone who chipped in to make light work of over 400 trees, shrubs & grasses. The gully has been fenced to prevent grazing and revegetation began on the site in 2014.

WEED ALERT – INVASIVE GARDEN PLANTS – *Privet: Broad Leaf & Small leaf*



A great deal of Landcare’s efforts centres on removing garden plants that are invading and taking over our bushland.

One of the major offenders is Privet, and in particular Broad-leaf Privet *Ligustrum lucidum* and Small-leaf Privet *Ligustrum sinense*. Both are ornamental evergreens and are commonly found in older gardens and are often used as hedging plants.

Birds consume their fruit and spread the seeds in their droppings. Plants invade creeks and gullies and can also occur on hillsides. They often form dense thickets which out-compete native vegetation and severely disrupt our ecosystems. Privet poses a serious threat to our already endangered grassy woodlands and riparian vegetation.

Photos: Privet flowers and berries



Ligustrum sinense usually flowers in Spring and *Ligustrum lucidum* in Summer. The flowers are white and are followed by clusters of blue-black berries. The flowers have a strong odour and the plant had been identified as a known allergen.

The best way to reduce its spread is to identify the plant and remove it. Seedlings can be hand pulled, whilst the cut and poison method or stem injection can be used for larger plants.

Landcare would encourage all gardeners to avoid planting species that have the potential to become bush invaders. Plants to avoid include: Hawthorn, Tree of Heaven, Cherry plum, Cootamundra wattle, Cotoneaster, Bridal creeper, Freesias and Watsonia to name a few.

For a list of common “bush invader plants” in our area, go to:

<http://wodongaurbanlandcarenetwork.org.au/blc/weeds-of-baranduda/table-of-contents/>

HELP BOOST AUSTRALIA'S RABBIT BICONTROL ACTION – *Invasive Animals CRC Media Release*



Wildlife researchers are urging all Australians to help monitor rabbit numbers during the impending release (Autumn 2016) of a Korean strain of the Rabbit Haemorrhagic Disease Virus, known as RHDV1 K5, which aims to boost the effectiveness of the current RHDV1 strain released in 1996.

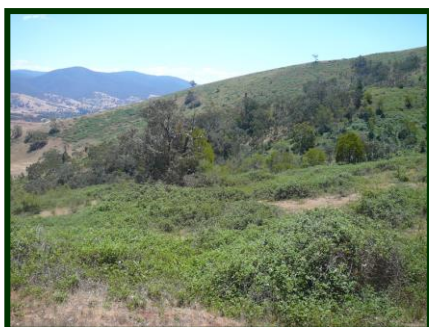
Landholders, farmers, community groups, and everyone across the country is invited to participate in the final stages of the research to support the release of K5 – Rabbit Haemorrhagic Disease Virus.

“We are asking all Australian’s to get involved and help us monitor rabbit numbers, you can take part by nominating to be a monitoring and/or release site. You can also get involved by downloading the free [RabbitScan App](#) to your phone and map rabbit sightings, helping us better understand where rabbits are. “Rabbits don’t stop at fence lines and we need landholders, Landcare groups and councils alike to take a coordinated community-led approach to assist in monitoring the effectiveness of our management methods.

“An integrated approach is crucial - K5 is not a silver bullet. The data collected by the community will be used to provide advice for land managers and farmers on the effectiveness of their management programs and best practice approaches for future management methods,” The Invasive Animals CRC are accepting expressions of interests from communities around Australia to nominate to become release or monitoring sites. They will notify applicants later in the year as to their suitability of being a release sites. Find out more via www.pestsmart.org.au/get-involved-as-a-monitoring-site.

***Kiewa Catchment Landcare will be holding a rabbit warren destruction demonstration in Autumn 2016 using the “rodenator”. Stay tuned for further details.

BLACKBERRY CONTROL – *When is the best time to spray?*



Blackberry has invaded the banks of watercourses, roadsides, pastures, plantations and bushland. On farms blackberries reduce pasture production, restrict access to water and land, and provide food and shelter for pest animals such as foxes.

Control with herbicides is greatest when plants are actively growing and free of any stress (e.g. moisture stress). This is because plants are more able to absorb and translocate herbicides at this time. As a guide, look at the tips of the canes for new, soft leaves, as this indicates active growth and shows that the canes are mature enough for herbicide to be applied.

The weather at the time of spraying will also influence results with foliar-applied herbicides. Hot conditions during the day (i.e. over 30 °C) can temporarily stress plants and limit the uptake or absorption of herbicides. Hot conditions coupled with low humidity will exacerbate this. During hot conditions, spray in the morning before 11.00 am daylight saving time (DST) or wait until weather conditions are milder.

Landcare Calendar: Upcoming Activities, Events and Key dates:

WHEN	WHAT	WHERE	RSVP/MORE INFORMATION
Tuesday 24th November 6.00pm	Community Visioning Workshop Yackandandah Creek 6.00 Guided Gorge Walk 7.00pm BBQ Tea 7.30pm Workshop	Yackandandah Sports Park Meet at Car Park Sports Park Function room	Belinda Pearce 0407 227 814 belinda.pearce@landcarevic.net.au Jenny Pena 0418 890 557
Wednesday 25th November 8.00pm	Kiewa Catchment Landcare Annual General Meeting	Graces Place 13 High St Yackandandah	Belinda Pearce 0407 227 814 belinda.pearce@landcarevic.net.au Jos McAlister 02 6027 1816 mcalistertojo@live.com

Keep up-to-date with Natural Resource Management events & news from across the North East: –

Simply send an email to: news@necma.vic.gov.au with the subject “SUBSCRIBE”

Kiewa Catchment Landcare Groups Contact List:

President	Peter Serpell	02 6028 9356	Vice President	Rowan Wallace	02 6027 5227
Secretary	Jos McAlister	02 6027 1816	Treasurer	Julie Pearce	02 6027 5286
Baranduda	Glen Johnson	02 6020 8667	Kiewa-Bonegilla	Pam Davis-Jones	02 6027 3356
Upper Kiewa	Alan McDonald	03 5754 1000	Kergunyah-Gundowring	Rowan Wallace	02 6027 5227
Yackandandah	Edith Nicholls	0418 494 101	Nursery Manager	Rhonda Serpell	02 6028 9356
Equipment hire for Landcare members: Spray units (organic/chemical), trailing seed drill, Rabbit ripper, wick wiper					
Brian Lane 02 6027 1433 Organic spray unit with Quik Spray & Wick wiper	Peter Serpell 02 6028 9356 Trailing seed drill & chemical spray unit	Rod Mitchell 02 6027 5 155 Chemical spray unit & Rabbit ripper	Belinda Pearce 0407 227 814 BBQ trailer & Tree poppers		
Project Manager, Landcare Facilitator & Newsletter: Belinda Pearce 0407 227 814 belinda.pearce@landcarevic.net.au					

MEMBERSHIP APPLICATION/RENEWAL: – Choose what option suits you best..

Join or renew online at: <http://kiewacatchmentlandcare.org.au> (online system accepts PayPal & Credit Card payments)

Our subgroups are: *Baranduda, Kiewa-Bonegilla, Kergunyah-Gundowring, Upper Kiewa and Yackandandah*

The subscription at \$15.00 per year, (a family is one membership). Please consider subscribing for more than one year.

CHEQUE PAYMENTS

Simply forward a cheque made out to “Kiewa Catchment Landcare Groups” and your membership form to the Membership Secretary, Jos McAlister, 8 Barlow Lane, Bruarong 3749.

ELECTRONIC FUNDS TRANSFER

Kiewa Catchment Landcare Groups, Commonwealth Bank BSB: 063-534 Account Number: 000902483

***Please include your **surname** as a reference on transfers and email Jos your payment date and membership form mcalistertojo@live.com. (We need all your details so that we can process your membership).

KIEWA CATCHMENT LANDCARE MEMBERSHIP FORM – NEW MEMBERS AND RENEWALS

NAME _____

POSTAL ADDRESS _____

PHYSICAL ADDRESS
(If different) _____

TELEPHONE _____ MOBILE _____

EMAIL _____

SUBSCRIPTION: 1 yr \$15.00 2 yrs \$30.00 3 yrs \$45.00 Other x \$15.00

SUBGROUP: Barandudua Kiewa-Bonegilla Kergunyah-Gundowring Upper Kiewa Yackandandah

I would like to receive newsletters by: mail e-mail

SIGNATURE _____ Number of people covered by this membership _____

Payment method: (please tick one) Cheque Cash Electronic funds transfer

Next Newsletter – Jan/Feb, please send any news items/photos to Belinda by 31st December