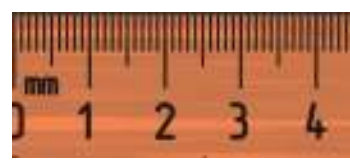


DUNG BEETLE IDENTIFICATION CHART



WHAT COLOUR IS YOUR BEETLE?



Black (Section A)



Brown (Section B)



Two-toned (Section C)

WHAT IS THE LENGTH OF YOUR BEETLE?

Measure from tip of the head to the end of abdomen (in mm)

SECTION A. BLACK BEETLES

LENGTH: 20 – 25mm

FEATURE: Blue/purple sheen on the underside

= *Geotrupes spiniger* (Blue dung beetle)



Bluish sheen on the underside



LENGTH: 13 - 20mm

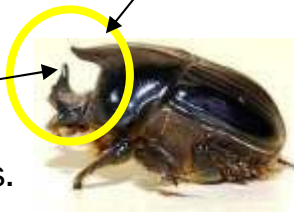
FEATURE: Shiny black. Protruding shoulder horn and 2 horns on head

= *Bubas bison* (male)

FEATURE: Two parallel ridges on head instead of horns. Protruding shoulder horn not present

= *Bubas bison* (female)

protruding shoulder horn



Male
Side view



Female
2 ridges on head

LENGTH: 10 – 13mm

FEATURE: Matt black, when viewed from the side there is a distinct shoulder ridge – horns are not present

= *Onthophagus binodis* (Humpbacked dung beetle)



Male



Female

LENGTH: 7 - 12mm

FEATURE: Shiny black with coppery green sheen. A slight groove runs down the middle of the midsection. Males have upright horns

= *Onthophagus australis* (native species)



Groove on midsection



Male has upright horns

LENGTH: 8 – 10mm

FEATURE: Shiny black. Major males have long curved horns that sweep back over the thorax. Minor males have shorter horns and females have no horns but have a similar body shape

= *Onthophagus taurus* (Bullhorned dung beetle)



Major male

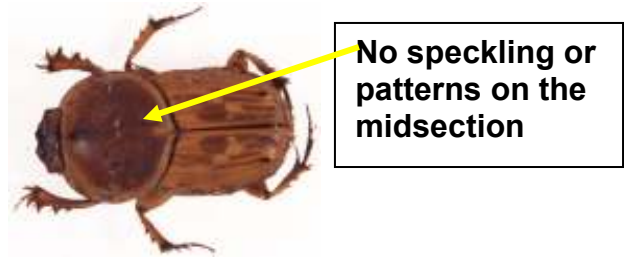


Female

SECTION B. BROWN BEETLES

LENGTH: 8 - 12mm

FEATURE: No speckling on the midsection
= *Euoniticellus fulvus*



LENGTH: 8 - 12mm

FEATURE: Dark speckling on the midsection and wing covers
= *Euoniticellus pallipes*



LENGTH: 7 - 9mm

FEATURE: Diamond pattern on the midsection. The male has a curved blunt horn on the head
= *Euoniticellus intermedius*

horn



SECTION C. TWO-TONED (view in bright light)

LENGTH: 20 - 25mm

FEATURE: Male has a double spur on back legs
= *Onitis aygulus*



LENGTH: 13 - 20mm

FEATURE: Male has a single spur on back legs
= *Onitis alexis* (Bronze dung beetle)



OTHER BEETLES COMMONLY FOUND IN DUNG



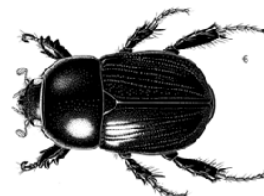
7-9mm

Aphodius
fimetarius



4-6mm

Aphodius
lividus



11-14mm

Heteronychus
arator
African Black Beetle (pest)

References & Images:

Doube, B., Dalton G., 2003, *Identifying dung beetles on the Fleurieu Peninsula*, Fleurieu Beef Group
Dung Beetles for Landcare Farming, 2008, *Dung Beetle Dictionary*, Landcare Australia
Tyndale-Biscoe, 1990, *Common dung beetles in pastures of south-eastern Australia*, CSIRO Australia